



KPF

ENGINEERS PVT. LTD.

GROWING TOGETHER...



AN ISO 9001:2015 CERTIFIED COMPANY

ADDRESS: GAT. NO. 79, JYOTIBA NAGAR, BEHIND NATIONAL WEIGHING BRIDGE
TALWADE, PIMPRI- CHICHWAD, PUNE-411062

CONTACT: 1) MR. ABHINAV DESAI (DIRECTOR)

MOB. NO.8329296741

E-MAIL: DIRECTOR@KPFINDUSTRIES.IN

2) MR. PRADIP MHETTAR (PLANT-HEAD)

MOB. NO.7387220420

E-MAIL: PRODUCTION@KPFINDUSTRIES.IN

KPF ENGINEERS PVT. LTD.

Introduction:

KPF Engineers Pvt. Ltd. Formed in year 2011 . It is an engineering manufacturing company, offering wide range of innovation & precision manufacturing solutions in various domain-process equipment, Defence related equipment manufacturing & Structural fabrication.

We assure you that we are right cost producer in market & our commitment to quality and delivery time is unparalleled. Also, we value safety of our employees and customers, with that in mind our work is armed with necessary safety equipment, as these are the foundations of our success over the past years.

Today KPF Engineers Pvt. Ltd. has grown into a matured organization with commitment to Customer satisfaction.

KPF Engineers Pvt Ltd is Defence Engineering manufacturing solutions in various domain-Process Equipment, Defence related equipment manufacturing & Nuclear Power Plant process equipment fabrication company.

KPF Engineers Pvt. Ltd. assures you that we are the right cost producer in the market. Our commitment to quality and on-time delivery is unparalleled, reflecting our responsibility towards our customers. Also, we value safety of our employees and with that in mind our work is armed with necessary safety equipment, as these were the foundations success over the past years.

Mission:

To support our customers by providing superior products and services of exceptional value which help them gain competitive advantage in their markets. We, meaning each employee of KPF, succeed because our customers succeed to sustain our vision and mission by constantly seeking renewal via continuous education and learning, and the application of new technologies and best business practices through continual Improvement. To provide a pleasant, nurturing and growth-oriented environment which encourages our employees to be highly productive and to grow personally and professionally

Vision:

To increase our knowledge and capabilities in the field of precision and complex Equipment Manufacturing with high quality. To become the global supplier/manufacturer of high accuracy multi-tasking components who provide the quality products and services preferred by our customers. We shall sustain growth without any negative impact on environment with a keen social sense.

QUALITY POLICY

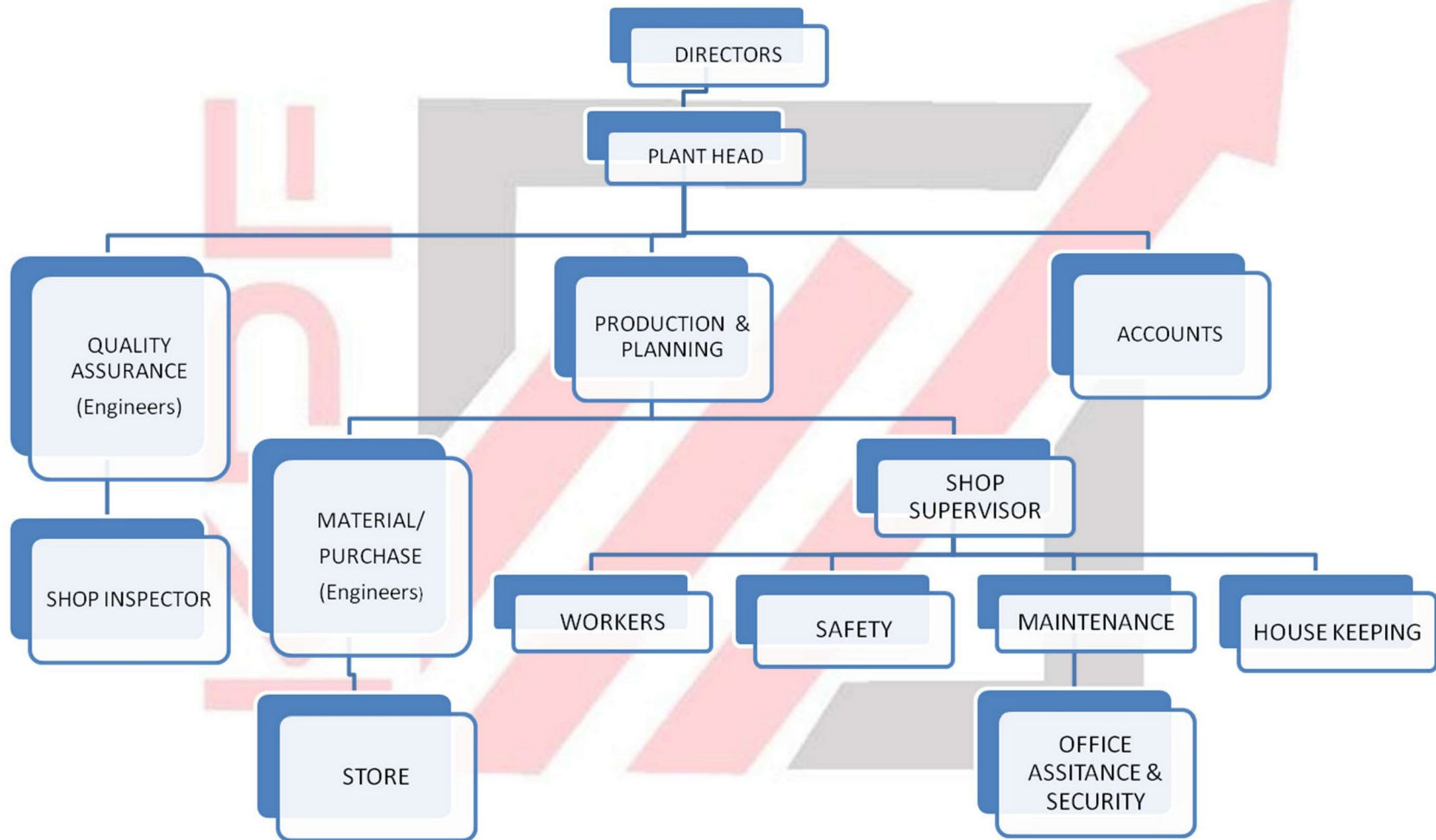
We, **KPF** ENGINEERS PVT. LTD., are committed for total customer's satisfaction by giving products at competitive price and on time delivery with excellent quality.

We will achieve this by continual improvement in our quality management system and growth of our employee.

QUALITY OBJECTIVES

- To consistently deliver quality products by adhering to set specifications, statutory & regulatory requirements.
- Predict & eliminate areas of customer complaint.
- Cost reduction through continual improvement & waste elimination.
- Training and motivating employees to inculcate the spirit of team work to achieve company's and individual's objectives.
- Upgradation of suppliers & associates.
- Providing safe and healthy environment to each employee.

ORGANISATION CHART



PRESENT MANUFACTURING FACILITY

Features:

- 12000 Sq. Ft. 2 Under Crane (10 Tonnes) Work Shop Height under Crane 11m at Talawade .
- 8000 Sq. Ft. Under Crane (5 Tonnes) Work Shop Height under Crane 11m at Talawade
- 30 Toness of mobile crane.
- No of working Team : 69 Nos. .
- Material Specialization :

DMR249A/AL6061/SA516Gr70/ SA350LF2/CRCA/Weldox/IS2062

MANUFACTURING FACILITY OVERHEAD CRANE- 10 T



MANUFACTURING FACILITY OVERHEAD CRANE- 10 T



MANUFACTURING FACILITY OVERHEAD CRANE- 5 T



PRESENT MANUFACTURING FACILITY

Man-power:

We have total 69 nos. of workers as following:-

Fitter = 11 nos.

Qualified Welder = 13 nos.

Grinder = 19 nos.

Helper = 22 nos.

Gas cutter = 2 nos.

Lathe operator = 2 nos.



KPF TEAM SKILL MATRIX

Sr. No	Name	Designation	Qualification	Years of Experience
1	Abhinav Desai	MD	BE Production	25 years (Business Experience)
2	Jitendra Parte	MD	Company Secretary(CS)	25 years (Business Experience)
3	Pradip Mhettar	GM/Plant Head	BE Mechanical	21 Years
4	Moshin Momin	Production/Safety Engineer	BE Mechanical	15 Years
5	Amol Magar	Production/Safety Engineer	BE Mechanical	10 Years
6	Chaitanya Pandit	Quality/Welding Engineer	BE Mechanical	10 Years
7	Akash Daware	Quality/NDT –DP-Level-II	BE Mechanical	7 Years
8	Shraddha Kulkarni	Accounts	B. Com.	10 Years
9	Shivadas Khandare	Quality Engineers / Welding Engineer	BE Mechanical	9 Years
10	Anil shelke	Quality Engineers / Welding Engineer	BE Mechanical	10 Years

LIST OF QUALIFIED WELDERS

Sr. No.	Welder Name	WPS No.	Welding Process	Material	Position	Range Qualified
1	Rahul Singh	106-362-MRSAM-2	GMAW	SA 516 GR. 70 # SA 516 GR. 70	4G	All
		516-02 (S067160A)	GMAW	DMR 249A# DMR 249A	3G	All
		516-01 (30105)	GMAW	DMR 249A# DMR 249A	3G	All
		104-182-DSV-2	GMAW	S355J2+N # S355J2+N	3G	All
		208-362(RML)	GMAW	S690QL # S690QL	3G	All
		KPF/WPS/2023-24/01	GMAW	S355J2 # S355J2	3G	All
		KPF/WPS/2023-24/02	GMAW	S355J2 # S355J2	3G	All
		208-361 (RML)	GMAW	S690QL # S690QL	3G	All
		344-07 (S067105)	GMAW	S690QL#S690QL	3G	All
		344-07 (S067105)	GMAW	S690QL#S690QL	2G	All
		104-182-VMFN-1	GMAW	IS 2062 GR E450 BR # IS 2062 GR E450 BR	3G	All
		104-182-VMFN-2	GMAW	IS 2062 GR E450 BR # IS 2062 GR E350 C	3G	All

		104-182-SPMB-8	GMAW	IS 2062 GR E350 C # IS 2062 GR E350 C	3G	All
		104-361-VLSRAM-2	GMAW	S690QL # DMR249A	3G	All
		104-281-AAL-6	GMAW	EN24 # SA 516 GR. 70	2F	All
		104-181-AAL-13	GMAW	EN8 # SA 516 GR. 70	2F	All
		104-181-AAL-14	GMAW	IS 513 CR2 # IS 2062 E350	3G	All
		204-282-MRSAM-1-EN8	GMAW	EN8 # S690QL	2F	All
		104-182-S068068-1	GMAW	IS 4923 YST240 # IS 4923 YST240	3G	All
		104-362-MRSAM-8	GMAW	IS 513 CR1 340 # IS 513 CR1 340	3G	All
		104-282-MRSAM-6-IS513	GMAW	S690QL # IS 513 CR1 340	3G	All
		104-282-SPMB-22	GMAW	IS 4923 YST240 # IS 4923 YST240	3G	All
		104-182-S067759-4	GMAW	IS 2062 E250 BR # IS 2062 E250 BR	3G	All

2	Iyamin Shaikh	106-01 (IRL)	GMAW	IS 2062 E350 # IS 2062 E350	3G	20 mm
		516-02 (S067160A)	GMAW	DMR 249A# DMR 249A	3G	All
		107-362-(60532)	GMAW	DMR 249A# SA 5016 Gr. 70	3G	All
		104-182-DSV-2	GMAW	S355J2+N # S355J2+N	3G	All
		516-01 (30105)	GMAW	DMR 249A# DMR 249A	3G	All
		208-362(RML)	GMAW	S690QL # S690QL	3G	All
		KPF/WPS/2023-24/01	GMAW	S355J2 # S355J2	3G	All
		344-07 (S067105)	GMAW	S690QL#S690QL	3G	All
		344-07 (S067105)	GMAW	S690QL#S690QL	2G	All
		104-182-VMFN-1	GMAW	IS 2062 GR E450 BR # IS 2062 GR E450 BR	3G	All
		106-362 (B05)	GMAW	IS 2062 E250 # S690Q	3G	All
		521-01 (S067041)	GMAW	IS 2062 E450 # S690Q	3G	All
		204-282-AAL-39	GMAW	EN24 # EN24	3G	All
		104-182-S068056-1	GMAW	IS 2062 E350 # IS 2062 E250	3G	All
		104-182-VMFN-2	GMAW	IS 2062 GR E450 BR # IS 2062 GR E350 C	3G	All
3	Sunil Kumar	106-362-MRSAM-2	GMAW	SA 516 GR. 70 # SA 516 GR. 70	3G	All
		104-362-GRSE-1	GMAW	DMR 249A# BS 3100 Gr. 4	3G	All

		516-01 (30105)	GMAW	DMR 249A# DMR 249A	3G	All
		104-182-DSV-2	GMAW	S355J2+N # S355J2+N	3G	All
		104-182-DSV-3	GMAW	S355J2+N # SA 516 GR. 70	3G	All
		344-11 (S067105)	GMAW	YS1100E # YS1100E	3G	All
		107-362 (RML)	GMAW	SA516 GR.70 # S690QL	3G	All
		207-361 (EN24)	GMAW	EN24 (817M40) # S690QLZ	3G	All
		344-07 (S067105)	GMAW	S690QL # S690QL	3G	All
		104-282-S067821-2	GMAW	IS4923 YST 240 # S690QL	3G	5 MM
		520-02 (S067041)	GMAW	IS 2062 E450 # IS 2062 E450	3G	All
		104-361-VLSRAM-2	GMAW	S690QL # DMR249A	3G	All
		204-282-S068138-1	GMAW	SA592 GR. F # S690QL	3G	All
		204-282-MRSAM-1-EN8	GMAW	EN8 # S690QL	2F	All
		106-362 (B05)	GMAW	IS 2062 E250 # S690QL	3G	8 MM
		104-182-S067759-4	GMAW	IS 2062 E250 BR # IS 2062 E250 BR	3G	All
		104-182-S068056-1	GMAW	IS 2062 E350 # IS 2062 E250	3G	24 MM
		104-182-DSV-4	GMAW	S355J2+N # SA 508 GR. 2 CLASS 2	3G	All

		208-362(RML)	GMAW	S690QL # S690QL	3G	All
		204-362-PRALAY-1	GMAW	S690QL # EN24	2F	All
		204-362-PRALAY-2	GMAW	S690QL # EN8	2F	All
		520-02(S067041)	GMAW	IS 2062 GR E450 BR # IS 2062 GR E450 BR	3G	All
		KPF/WPS/2023-24/01	GMAW	S355J2 # S355J2	3G	All
		107-362 (RML)	GMAW	SA 516 GR. 70 # S690QL	3G	All
		207-361(EN24)	GMAW	EN24 (817M40) # S690QL	3G	All
		344-07 (S067105)	GMAW	S690QL#S690QL	3G	All
		344-07 (S067105)	GMAW	S690QL#S690QL	2G	All
		104-182-VMFN-1	GMAW	IS 2062 GR E450 BR #IS 2062 GR E450 BR	3G	All
		104-182-VMFN-2	GMAW	IS 2062 GR E450 BR #IS 2062 GR E350 C	3G	All
4	Vinod Singh	106-362-MRSAM-2	GMAW	SA 516 GR. 70 # SA 516 GR. 70	3G	All
		516-01 (QCIL)	GMAW	DMR 249A# DMR 249A	3G	16 mm
		104-181-AAL-14	GMAW	IS 513 CR2 # IS 2062 E250	3G	4 MM
		104-282-S067607-1	GMAW	IS 513 CR2 # S690QL	3G	6 MM
		KPF/WPS/2023-24/03	GMAW	S355J2+N # SA 240 TYPE 304	3G	All

		104-282-S067607-1	GMAW	IS 513 CR2 # S690QL	3G	6
		208-361 (RML)	GMAW	S690QL # S690QL	3G	All
		104-182-DSV-2	GMAW	S355J2+N # S355J2+N	3G	All
		204-282-MRSAM-1-EN8	GMAW	EN8 # S690QL	2F	All
		104-282-SPMB-22	GMAW	IS 4923 YST240 # IS 4923 YST240	3G	All
		106-362 (B05)	GMAW	IS 2062 E250 # S690QL	3G	8 MM
		104-182-S067759-4	GMAW	IS 2062 E250 BR # IS 2062 E250 BR	3G	All
		104-182-S068056-1	GMAW	IS 2062 E350 # IS 2062 E250	3G	24 MM
		344-11 (S067105)	GMAW	YS1100E # YS1100E	3G	All
5	Pankaj Gupta	106-362-MRSAM-1	GMAW	SA 516 GR. 70 # SA 516 GR. 70	4G	All
		520-02(S067041)	GMAW	DMR 249A# DMR 249A	3G	All
		104-182-DSV-2	GMAW	S355J2+N # S355J2+N	3G	All
		208-361 (RML)	GMAW	S690QL # S690QL	3G	24
		208-361 (RML)	GMAW	S690QL # S690QL	2G	24
		344-07 (S067105)	GMAW	S690QL#S690QL	3G	All
		106-362 (S067175A)	GMAW	IS 2062 E250 # IS2062 E250	3G	8MM
		104-182-S067759-4	GMAW	IS 2062 E250 # IS2062 E250	3G	All

		104-182-S068056-1	GMAW	IS 2062 E350 # IS 2062 E250	3G	24MM
		104-282-MRSAM-2- IS4923	GMAW	IS 4923 YST 310 # IS 4923 YST 310	3G	8MM
		344-09 (817M40#690QL)	GMAW	EN24 # S690QL	2F	FILLET ALL Ø >25MM
		104-182-SPMB-7	GMAW	S690QL # IS 4923 YST 310	3G	8MM
		104-182-VMFN-1	GMAW	IS 2062 GR E450 BR #IS 2062 GR E450 BR	3G	All
		104-182-S067759-4	GMAW	IS 2062 E250 BR # IS 2062 E250 BR	3G	All
		208-361 (RML)	GMAW	S690QL#S690QL	2G	All
		KPF/WPS/2023- 24/01	GMAW	S355J2 # S355J2	3G	All
		516-01 (30105)	GMAW	DMR 249A# DMR 249A	3G	All
6	Pintoo Yadav	106-362-MRSAM-2	GMAW	SA 516 GR. 70 # SA 516 GR. 70	3G	All
		107-362-S067160A-1	GMAW	DMR 249A # SA 516	3G	20 mm
		107-362-S067160	GTAW	DMR 249A# DMR 249A	3G	20 mm
		344-11 (S067105)	GMAW	YS1100E # YS1100E	3G	All
		104-182-DSV-2	GMAW	S355J2+N # S355J2+N	3G	All
		104-362-MRSAM-8	GMAW	IS 513 CR1 340 # IS 513 CR1 340	3G	All
		106-362 (S067175A)	GMAW	IS 2062 E250 # IS2062 E250	3G	8MM
		104-182-S068056-1	GMAW	IS 2062 E350 # IS 2062 E250	3G	24MM

		104-282-MRSAM-5-EN24	GMAW	EN24 # IS 513 CR1 340	2F	FILLET ALL Ø >25MM
		104-282-MRSAM-6-IS513	GMAW	S690QL # IS 513 CR1 340	3G	All
		KPF/WPS/2023-24/01	GMAW	S355J2 # S355J2	3G	All
		104-182-VMFN-2	GMAW	IS 2062 GR E450 BR # IS 2062 GR E350 C	3G	All
		104-182-VMFN-1	GMAW	IS 2062 GR E450 BR # IS 2062 GR E450 BR	3G	All
		341-07(S067105)+28-362 (RML)	GTAW + GMAW	S690QL # S690QL	3G	For GTAW = 8 mm For GMAW = 24
7	Lokman Molla	104-182-VMFN-2	GMAW	IS 2062 GR E450 BR # IS 2062 GR E350 C	3G	All
		KPF/WPS/2023-24/01	GMAW	S355J2 # S355J2	3G	All
		344-07 (S067105)	GMAW	S690QL # S690QL	3G	24MM
		104-182-DSV-2	GMAW	SA516 GR.70 # SA516 GR.70	3G	All
		104-182-S068116-3	GMAW	DMR249A # DMR249A	3G	All
8	Raju Yadav	208-361 (RML)	GMAW	S690QL # S690QL	3G	24
		104-182-DSV-2	GMAW	SA516 GR.70 # SA516 GR.70	3G	All

		104-181-AAL-1	GMAW	SA 516 GR. 70 # SA 516 GR. 70	3G	24
		104-182-S068116-3	GMAW	DMR249A # DMR249A	3G	All
		104-182-S068056-1	GMAW	IS 2062 E350 # IS 2062 E250	3G	24MM
		KPF/WPS/2023-24/01	GMAW	S355J2 # S355J2	3G	All

WORK TABLE



Size= 5000mm x 10000 mm

DETAILS OF MACHINES



CNC Cutting Machine (Plasma + Oxy-Acetylene)- Year of Manufacturing= 2019

Make= Hypertherm Powermax 105A ; 2500 mm X 6000 mm

Thickness Range- MS upto 200 mm & SS upto 20 mm ; Accuracy= 1 mm



Horizontal Machining Center with Universal Head Make-Butler Hi-Power Elgamill

X= 6000 mm ; Y=1750 mm ; Z=1000 mm ; Accuracy = Year of Manufacturing = 2022



Turret Milling Machine-M1TR Make = Micomill

X= 250 mm ; Y= 1200 mm ; Z= 300 mm Accuracy= 30 Microns Year of Manufacturing = 2019



Lathe Machine

Make = Fostex Capacity = Length upto 1000 mm ; Accuracy= 30 Microns ;Year of Manufacturing = 2019



Lathe Machine

Make = Fostex Capacity = Length upto 1000 mm Accuracy= 30 Microns Year of Manufacturing = 2019



Milling Machine

Make = BHAMBAR X= 300 mm ; Y= 1500 mm ; Z= 300 mm ; Accuracy= 30 Microns Year of Manufacturing = 2019

OUR COMPLETED PROJECTS

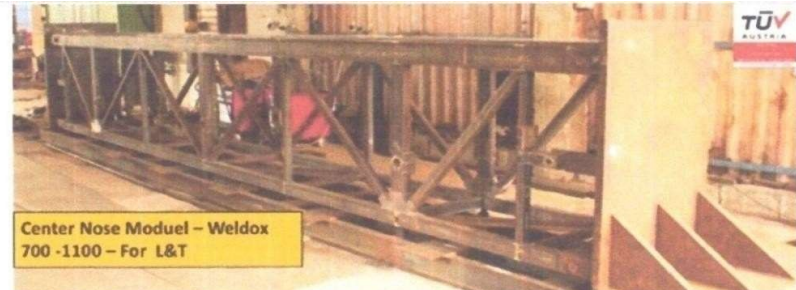


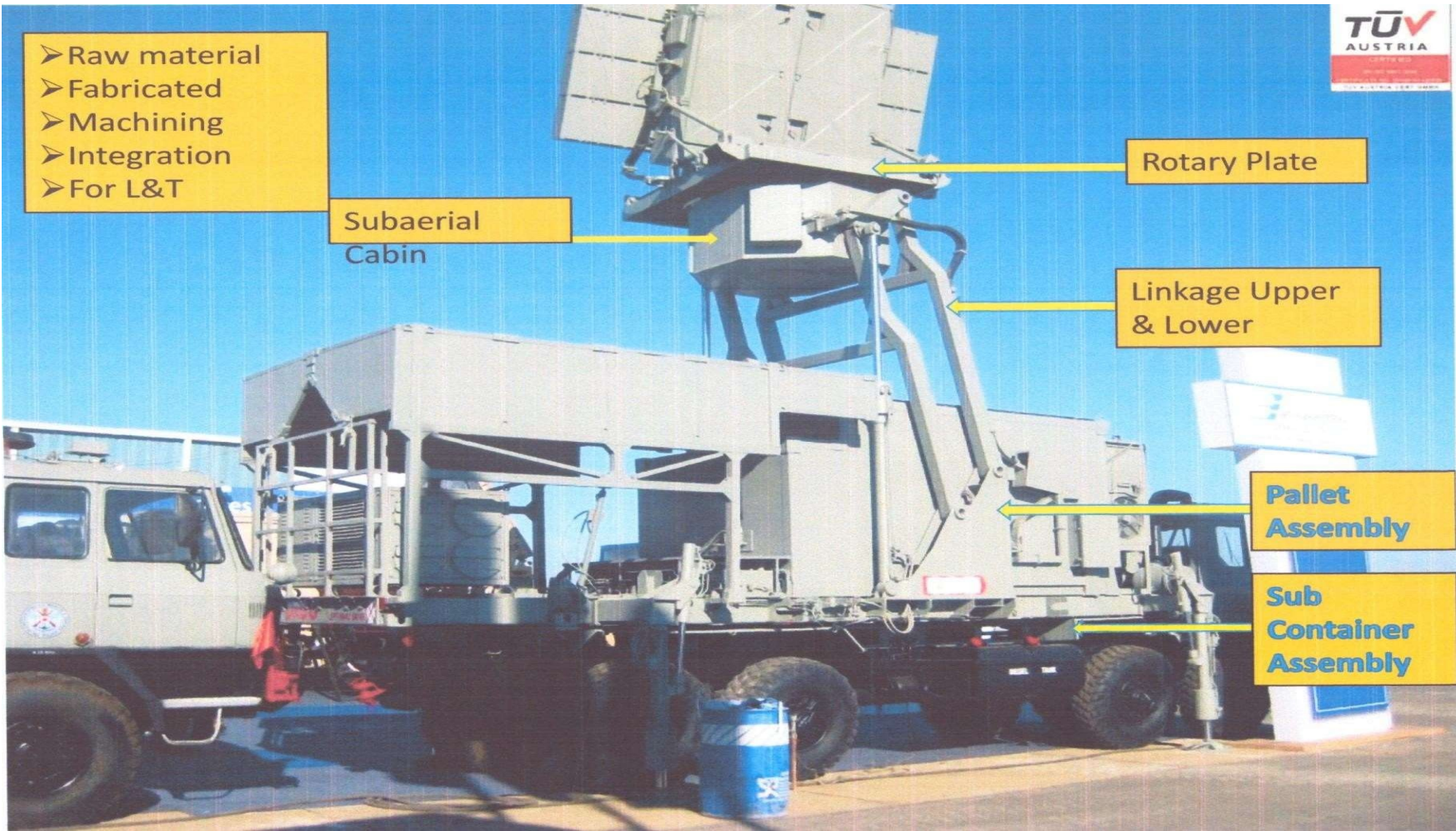
Cartridge- Material-DMR 249A , SA 105



Successfully developed the following bridging systems for the L&T and Indian Army:

- 1- BLT - T72 Bridging System
- 2- Sarvatra Bridging System
- 3- Short Span Bridging System – 5m and 10m
- 4- Modular Bridging System





Rohini Radar System- Material-SA 516 GR 70 (Refer next 2 pages)



Rohini Radar System-Upper & Lower Linkage -Material-SA 516 GR 70



MACHINING STAGE



Rohini Radar System-Pallet-Material-SA 516 GR 70



Sub Aerial Cabin- -Material-SA 516 GR 70



Indigenous rocket launcher-Material DMR 249A, SA 350 LF2 CL2 , CRCA (Refer next 5 pages)

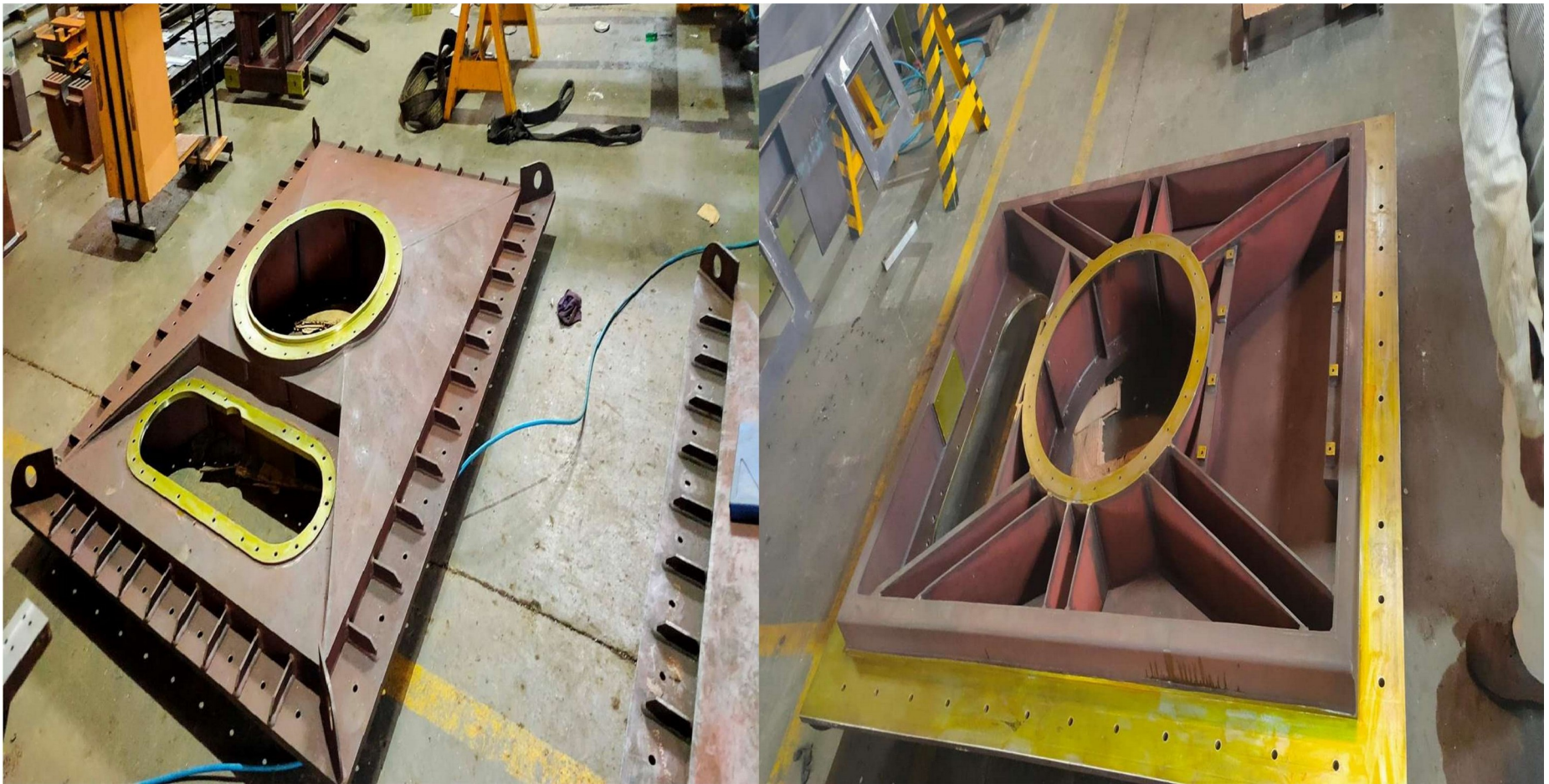
LEVEL



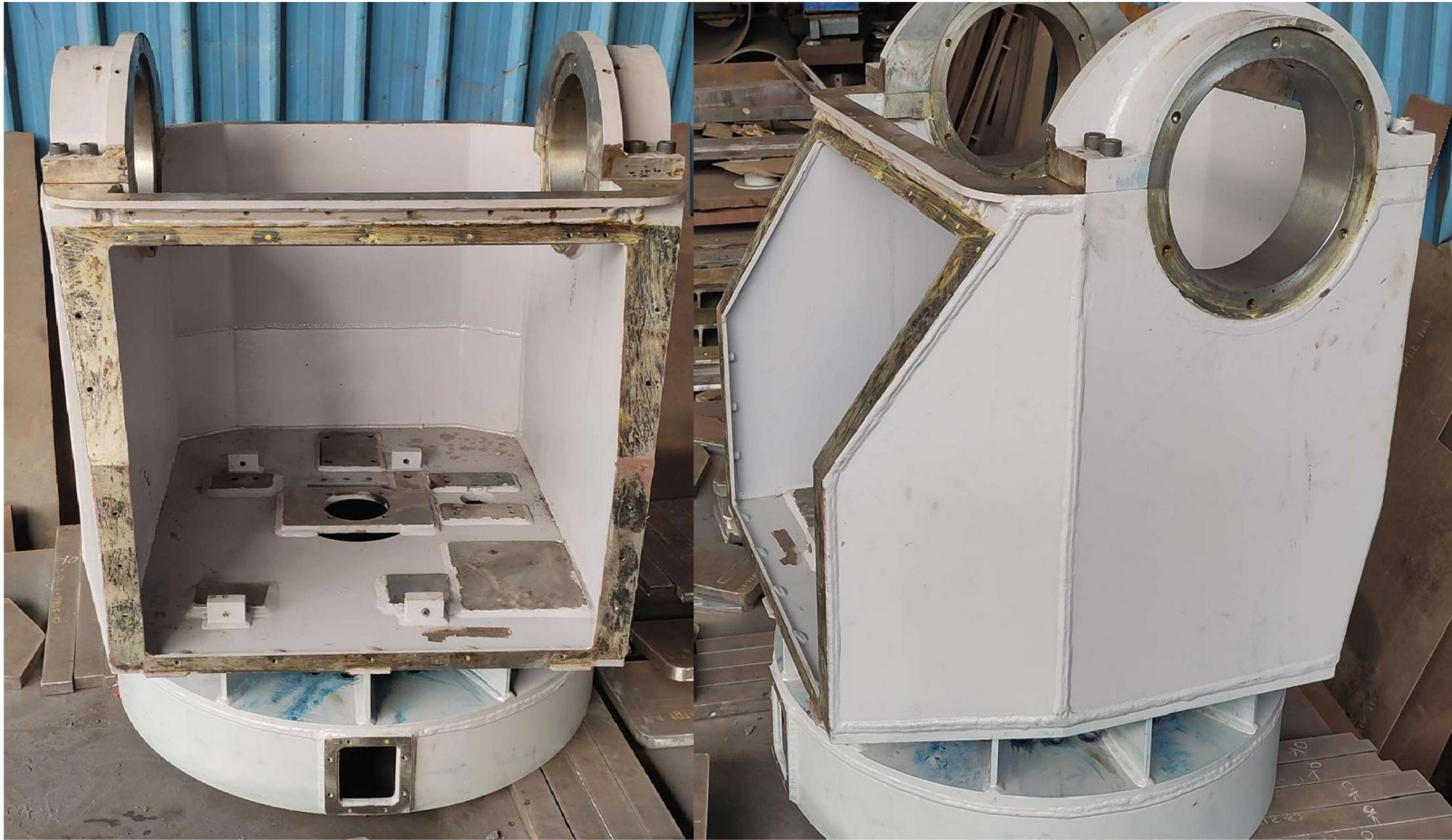
IRL-Stationary Frame- Material-DMR 249A , SA 350 LF 2 CLASS II



IRL-Cradle Material-DMR 249A , SA 350 LF 2 CLASS II, CRCA



IRL- Foundation Frame- Material DMR 249A



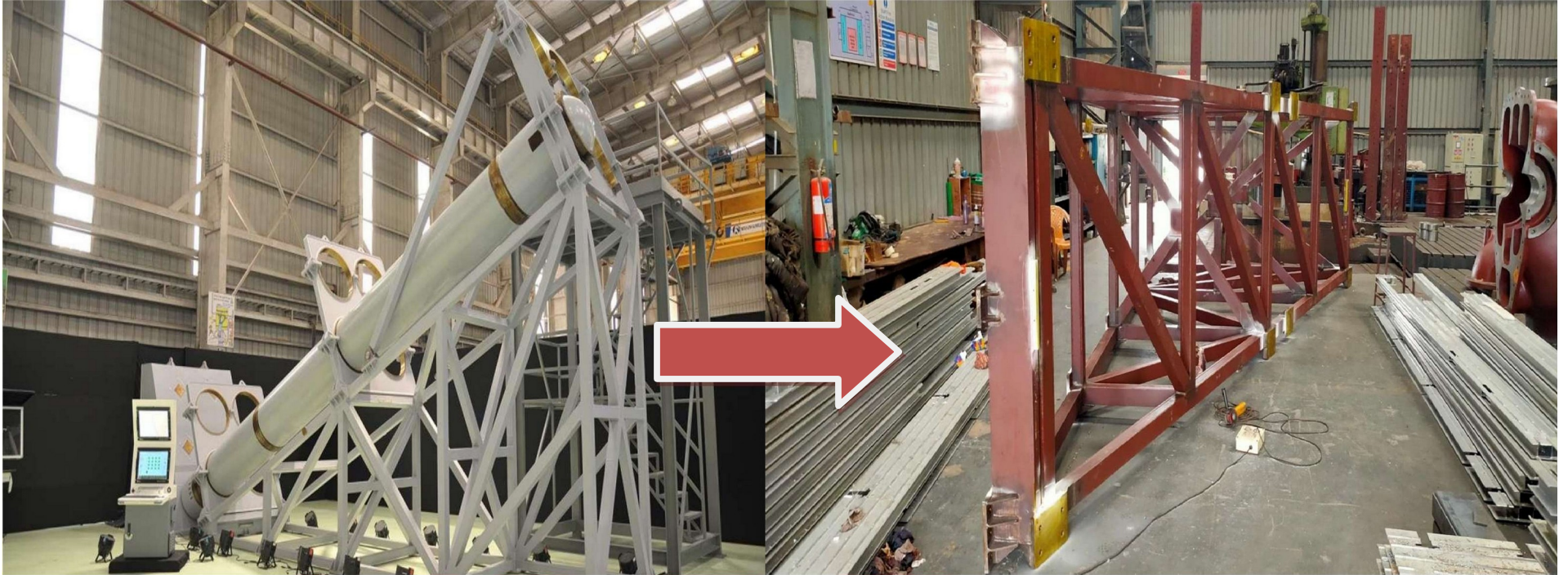
Revolving Base-Material-DMR 249A, CRCA , SA 350 LF 2 CLASS II , CRCA



Mobile & Immobile Tube Structure- Material-IS 2062 E250



Ship Stabilizer- (FIN)-DSV-FIN-Material IS 2062 E350



Quadruple Canisterised Inclined Launcher –Material-DMR 249A , SS 106



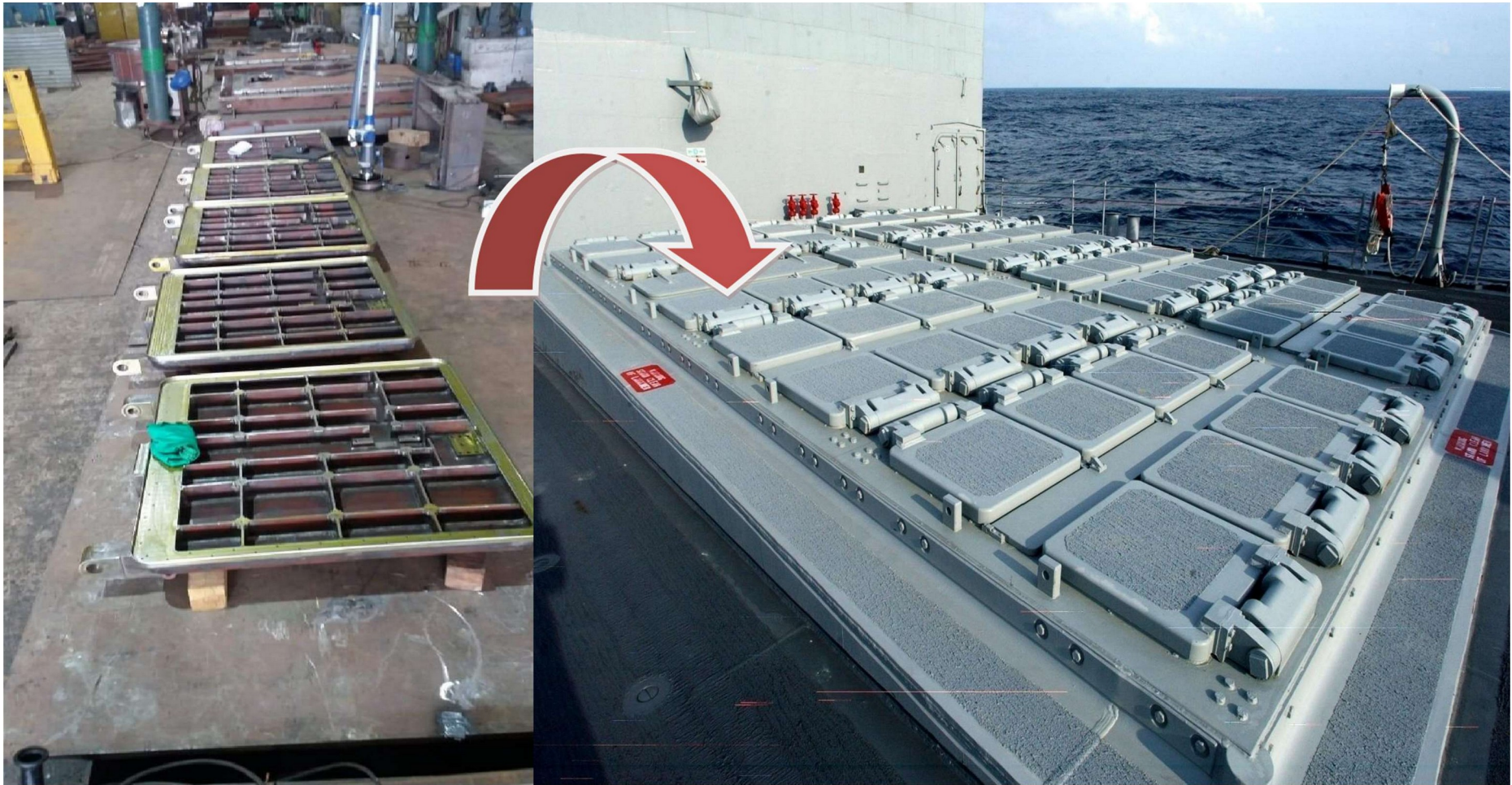
**Universal Vertical Launcher Mechanism-Launcher Frame Assembly- 2100 X 4000 X 9000 mm;Material- DMR 249A
(Refer next 3 pages)**



UVLM –Dummy Canister- Material IS 2062 , SA 105 ; Dia. 1000 mm ; 9000 mm Length



UVLM-Top Support Structure- 4700 X 2100 X 600 ; Material DMR 249A



UVLM-Hatch – Material- DMR 249A-1500X1500X250



MACHINING STAGE



TCT5-Tilt Beam- 3000 x 1300 x 15000 mm Material-IS 2062 E450



TCT- Cup Fabrication-Material- IS 2062 E450 & SA 508



TCT- Saddle- Material IS 2062 E450 , SA 508



B05 Dome



SG BEAM-Material DMR 249A , IS 2062 E250



MRSAM-Underframe- 2500 x 7500 x 1300

Material- SA 516 GR 70



CMLUS Super-Structure Material-SA 516 GR 70



HDPS Front Wheel Carriage Assembly Material- S690QL , SA 106 Gr B



DSV-Cartridge- 7500 X 2500 X 2100 mm-Material IS 2062 E350



Steering Gear-STBD & PORT-Material DMR 249A

METALIC CANISTER

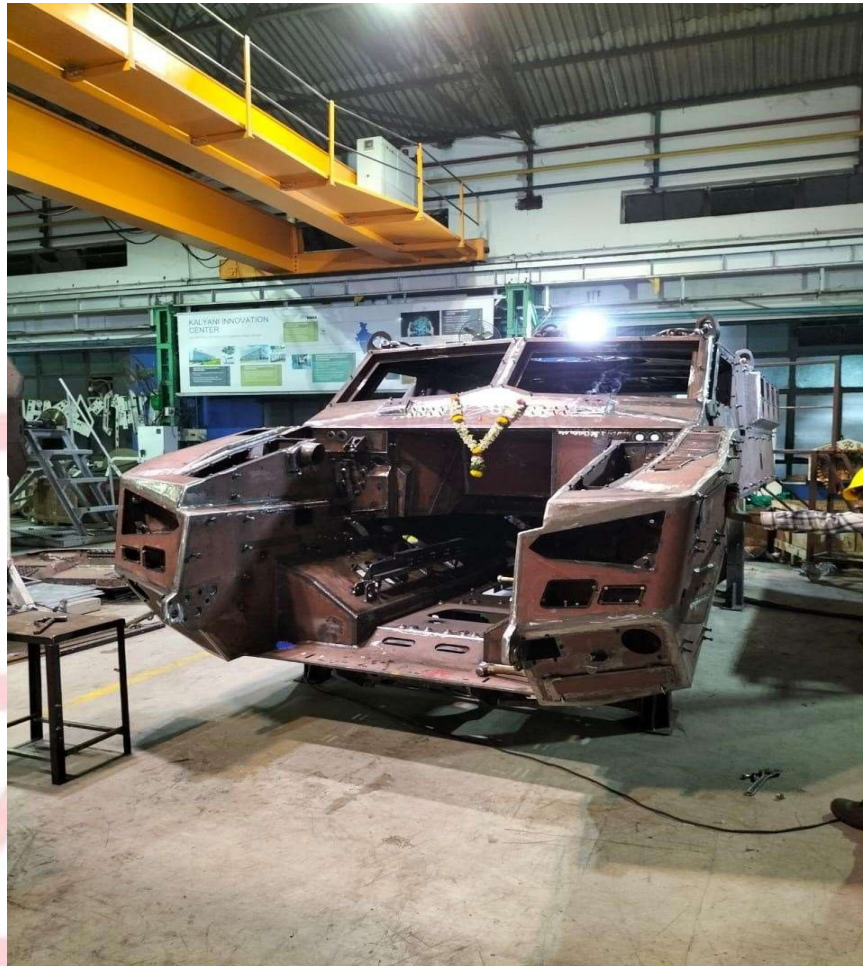


**LAUNCHING FRAME – MATERIAL – 690QL , SIZE –
W- 2.9 M X L-11.9M X H-0.59M**

KPF ENGINEERS PVT. LTD.



Bharat-Forge-Tank Wheel Fabrication



Bharat-Forge-Armed Vehicle-Armad Steel



Bharat-Unmanned Ground Vehicle (UGV)



BENTONITE TANK 12000 X 2300 X 2100



ILAY HYDRO POWER PLANT EXTENSION-LOWER BRACKET-Material EN10029-S355J2+N

5560 X 949.5 (70 mm maximum thickness & Weight = 18 Tonns)



U-mould -3000 mm X 3000 mm X 2500 mm- Material –IS 2062 E250



Corner Brackets -3050 X 1930 X 1550- Material EN10029-S355J2+N



PARLE BISCUITS MAIDA SILO Ø2500 X 11300

MATERIAL – IS 2062 E250 GR. B & SS 304



RANA PRATAP SAGAR – LOWER BRACKET Ø3620 X 2000

MATERIAL – IS 2062 E350C / WEIGHT = 18 TONNS



Side Wall for non-drive face- 5000 X 2000 x 350-Material : IS 2062 E350C



Throat Block- 2500 X 600 X 500 -Material: IS 2062 E350C



Side Wall –Cylinder Side- 5000 X 2000 x 350-Material: IS 2062 E350C



Upstream Structure & Downstream Structure- 5000 X 2000 x 350-Material : IS 2062 E350C



Doctor Roll- Material : SS 316



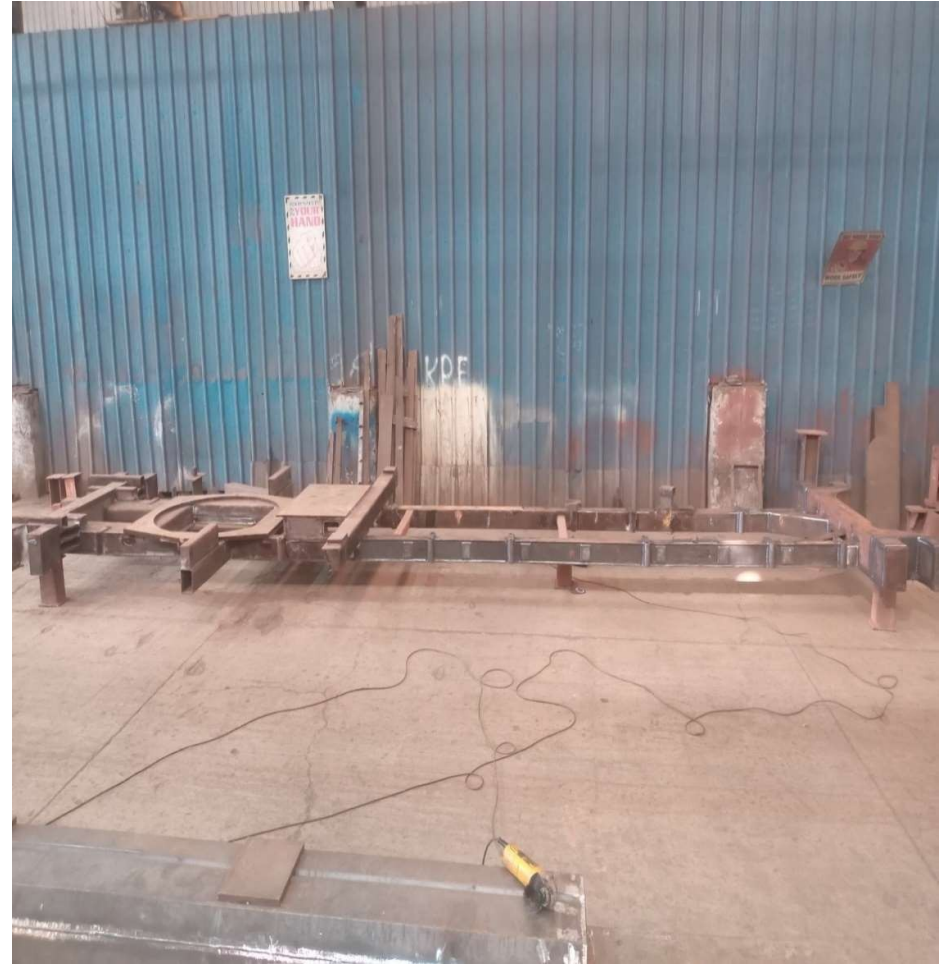
RML TILT BEAM-MATERIAL S690QL- 7000mm x 2500 mm x 3000mm



AAL-LBA (Akash Army Launcher- Launch Beam Assy) S690QL = 3600mmx2500mmx500mm



LAUNCHING POSITION



Underframe Welded Assy - Material SA516 = 7000mm X 2000mm X 200mm





TCIL - DUMMY CANISTER ASSY MATERIAL- IS 2062 = 9000mm X 2000mm DIA



MRSAM & ASAM – UNDERFRAME STRUCTURE WELDED MATERIAL:- EN 10025-6-S690QL SIZE:- 8000 X 2286 X 1000



MRSAM & ASAM - ERECTING FRAME MATERIAL:- EN 10025-6-S690QL SIZE:- 5100 X 2300 X 400



LRLACM : DUMMY CANISTER MATERIAL:- IS 2062 E250 GR BR / SIZE:- 8000 X Ø800



FCR : DUMMY ANTENA MATERIAL:- S690QL / SIZE:- 4500 X 2500 X 450



UPPER CASING MATERIAL:- IS 2062 E250 GR BR / SIZE:- 4500 X 2800 X 1500



FCR : ROTARY PLATFORM STRUCTURE MATERIAL:- S690QL / SIZE:- 5000 X 2660 X 500



ARUDRA : PALLET STRUCTURE MATERIAL:- IS 2062 E250 GR BR / SIZE:- 6050 X 2600 X 300

SAFETY

- WE PROVIDE SAFETY HELMETS, SHOES, GOGGELS, AND HANDGLOVES FOR WORKERS.
- FIRE EXTINGUISHER & FIRST AID BOX.
- ALSO CCTV CAMERAS INSTALLED FOR OBSERVATION.
- SAFETY INSTUCTIONS IN PLANT.

BOARDS DISPLAYED



Thank
you

